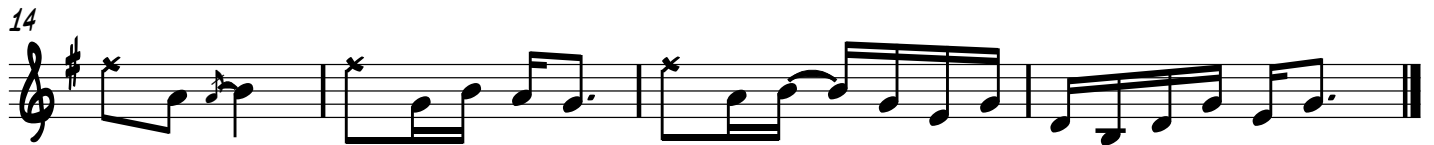


# BLACK SALLY GOODIN

PETE MCMAHAN - TRADITIONAL



TUNE FIDDLE AS SHOWN - GDAD.  
PLAY AS IF IN STANDARD TUNING.

The diagram shows a treble clef staff with four lines. The top line has a G-clef, the second line has a D-clef, the third line has an A-clef, and the bottom line has a D-clef. This represents the GDAD tuning for a fiddle.